



# LINERO MosaiQ

## VERSATILE, VARIABLE, EYE-CATCHING DESIGN

 KESSEBÖHMER



**LINERO MosaiQ is flexible and versatile**, offering users a huge choice for configuring the space between the worktop and the wall units. The multi-functional, anodised aluminium rail can be either screwed or glued to the wall, making it ideal for glass splashbacks too. Used as a light strip, it casts a warm-toned, indirect light over the attached elements.

The MosaiQ shelf elements are hung on below the rail or clipped on above it. The shelf elements come in a choice of three heights and two widths. Horizontal strips on the shelf elements accentuate the design. The three sophisticated grey tones of the

mat, tactile coating were chosen in consultation with experts at a well-known design institute. Functional elements include various hooks and single and double roll holders. There is also a specially designed knife block and holders with an angled bases, for example, to take a pot of herbs. LINERO MosaiQ has been launched with ten core applications which users can mix and match as they please. It's the perfect way to make the most of the midway space in kitchens and bathrooms. LINERO MosaiQ elements and LINERO 2000 elements are compatible when they are attached below the rail.



Dimensions (mm)

Art. No.

**Aluminium rail set**

**LINERO MosaiQ**

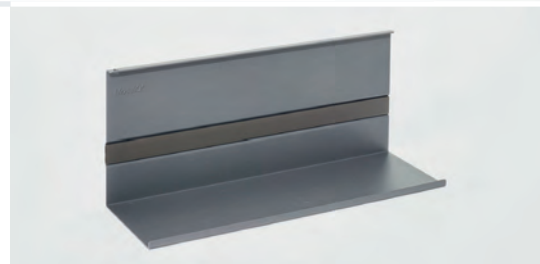
- 1 aluminium rail
- 2 end caps
- 1 connector
- Connectors to screw onto wall

BxDxH	Art. No.
600 x 32.9 x 41.5	<b>0089009845</b>
900 x 32.9 x 41.5	<b>0089019845</b>
1,200 x 32.9 x 41.5	<b>0089029845</b>
1,500 x 32.9 x 41.5	<b>0089039845</b>



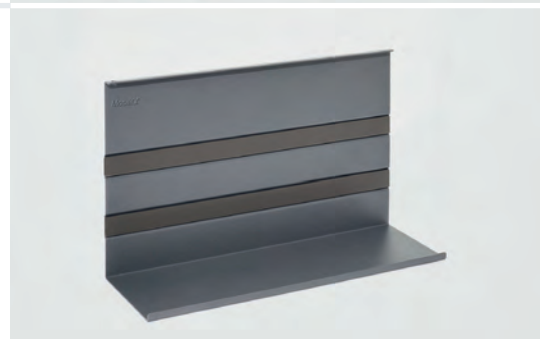
**Universal shelf 140  
LINERO MosaiQ**

BxDxH	Art. No.
350 x 110 x 140	<b>0089129844</b>
Storage area: 350 x 107	



**Universal shelf 200  
LINERO MosaiQ**

BxDxH	Art. No.
350 x 110 x 200	<b>0089139844</b>
Storage area: 350 x 107	



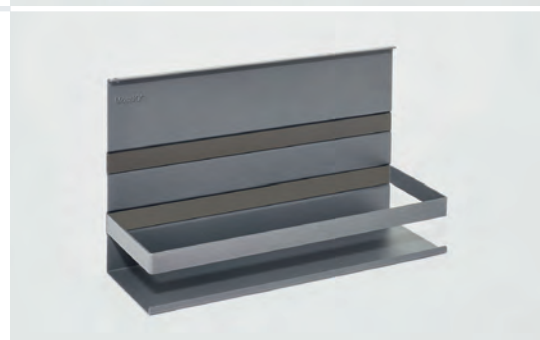
**Universal shelf 300  
LINERO MosaiQ**

BxDxH	Art. No.
350 x 110 x 300	<b>0089149844</b>
Storage area: 350 x 107	



**Universal shelf 200 with rail  
LINERO MosaiQ**

BxDxH	Art. No.
350 x 110 x 200	<b>0089189844</b>
Storage area: 350 x 107	



**Universal shelf 300 with rail  
LINERO MosaiQ**

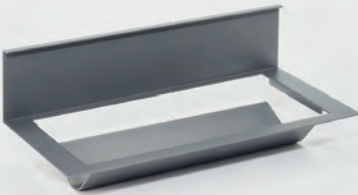
BxDxH	Art. No.
350 x 110 x 300	<b>0089199844</b>
Storage area : 350 x 107	





**Art. No.**      Dimensions (mm)

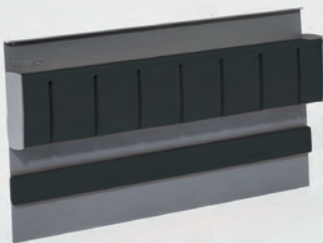
**0089279844**      BxDxH      **Memo board 300**  
350 x 110 x 300      **LINERO MosaiQ**  
Storage area:      Magnetic blackboard  
350 x 107      (glass surface with shelf, holds magnets, wi-  
pe-clean)



**0089089844**      BxDxH      **Paper roll holder**  
350 x 155 x 120      **LINERO MosaiQ**  
for kitchen paper rolls up to 295 mm wide



**0089099844**      BxDxH      **ROLLINERO foil roll holder**  
350 x 110 x 300      for clingfilm and foil rolls up to 330 mm  
wide



**0089069844**      BxDxH      **Magnetic knife block**  
350 x 45 x 200      **LINERO MosaiQ**  
Finish: Plastic, black/grey



**0089109003**      BxDxH      **Container/herb pot**  
135 x 135 x 156      **LINERO MosaiQ**  
incl. removable dividers  
Material: ABS, UV-resistant, food safe  
and dishwasher safe



**0089119003**      BxDxH      **Shallow dish**  
116 x 115 x 56      **LINERO MosaiQ**  
Material: ABS, UV-resistant, food safe  
and dishwasher safe